



NEWINGTON
LONDON

2 Bedrooms

Apartment

Located in London

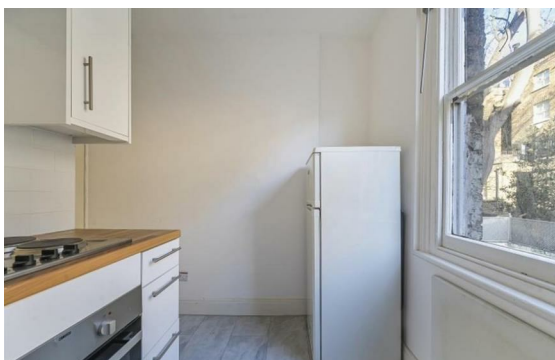
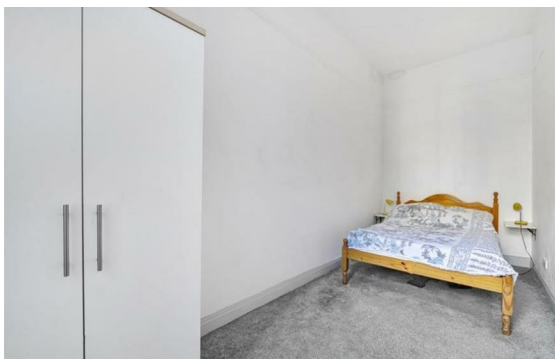
£710 Per Month



info@newingtonstates.com

<http://www.newingtonstates.com>

020 7724 2233



Newington Estates are delighted to present you this two bedroom apartment located in Gloucester Square. The property comprises a reception with large windows which flood the room with natural light, a separate kitchen, two double bedrooms, and a further family bathroom.

The property offers access to the fabulous private gardens located opposite the apartment for the use of residents within the Square only. Marble Arch and Oxford Street is just 0.5 miles away, with their array of exceptional shops, cafes, restaurants and other world class amenities literally around the corner. Marble Arch tube (Central Line Zone 1) provides simple and efficient transport across the capital, whilst Paddington International station is also within close proximity, providing a simple commute to Heathrow Airport and across the country. EPC RATING: C

Energy Efficiency Rating:

Agents Note: Whilst every care has been taken to prepare these particulars, they are for guidance purposes only. All measurements are approximate and are for general guidance purposes only and whilst every care has been taken to ensure their accuracy, they should not be relied upon and potential buyers/tenants are advised to recheck the measurements.

NEWINGTON LONDON

60 Upper Montagu Street

London

W1H 1SN

020 7724 2233

info@newingtonestates.com

<http://www.newingtonestates.com>